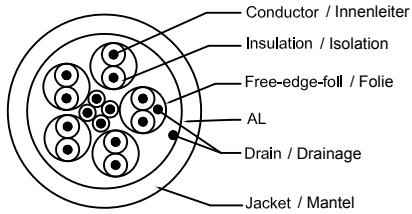
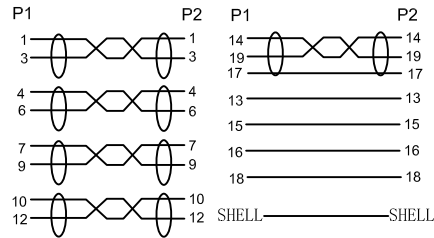


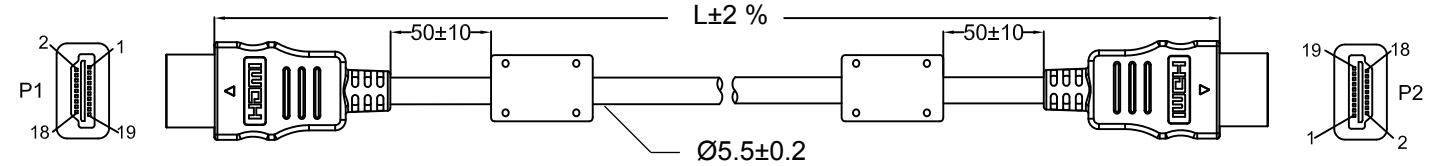
Querschnitt  
Cross section



Belegung  
Wiring



Zeichnung  
Drawing




Nr. / No.	Länge / Length (m) - Verpackung / Packing
31906	1.00
31907	1.50
31908	2.00
31909	3.00
31910	5.00
34251	1.00 - PL
34259	1.50 - PL
34267	2.00 - PL
34271	3.00 - PL
34275	5.00 - PL
61906	1.00 - SB
61907	1.50 - SB
61908	2.00 - SB
61909	3.00 - SB
61910	5.00 - SB

HiSpeed HDMI-Kabel mit Ethernet  
 - Anschlüsse: HDMI-Stecker > HDMI-Stecker  
 - Ferrite: 15 x 12 x 7,3 mm  
 - Kontakte: 19 PIN; vergoldet  
 - Standards: HDTV bis 2160p (4K), 3D bis 1080p (Full HD) ARC, HEC  
 - Kabel: UL AWM STYLE 20276 80°C 30V VW-1 30 AWG  
 - Isolationswiderstand: DC 300 V 10 MOhm  
 - Kontaktwiderstand: 5 Ohm  
 - Konformität: RoHS

HiSpeed HDMI cable with Ethernet  
 - Connectors: HDMI plug > HDMI plug  
 - Ferrites: 15 x 12 x 7.3 mm  
 - Contacts: 19 PIN; gold-plated  
 - Standards: HDTV up to 2160p (4K), 3D up to 1080p (Full HD) ARC, HEC  
 - Cable: UL AWM STYLE 20276 80°C 30V VW-1 30 AWG  
 - Insulation resistance: DC 300 V 10 MOhm  
 - Contact resistance: 5 Ohm  
 - Conformity: RoHS

Änderungen

Datum	Name	gez.:	Datum	Name	Bezeichnung	Blatt
		gez.:	21.01.2016	tf	HDMI™ HiSpeed Kabel/wE FG 	
		gepr.:	21.01.2016	tf		
		Norm:			Zeichnungs-Nr.:	von
Änderungen vorbehalten / Subject to change						